

3 Ply Disposable Mask



Features and Benefits

- Suitable for most faces. No need to worry about finding the correct size as this mask is close fitting and adapts to the contour of most faces.
- Fatigue Resistant. The straps are designed to eliminate ear pain; even after long durations of wear.
- Hypoallergenic. This mask is formulated to mitigate skin irritation.
- Adjustable Nose Clip to seal the nose bridge, preventing harmful airborne particulate matters and aerosols from penetration, and avoiding foggy glasses.
- Disposable. No need to worry if the mask has been sanitized after a previous use as they are disposable and designed not to be reused.
- Perfect for use in general day to day activities such as going to the supermarket or use in restaurants.

When to Use a Mask

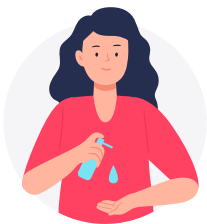
- If you are healthy, you only need to wear a mask if you are taking care of a person with the suspected 2019-nCoV infection.
- Wear a mask if you are coughing or sneezing.
- Masks are effective only when used in combination with frequent hand-cleaning with alcohol-based hand rub or soap and water.
- If you wear a mask, then you must know how to use it and dispose of it properly.

How to wear medical masks to protect against coronavirus

- Before putting on a mask, clean hands with alcohol-based hand rub or soap and water.
- Cover mouth and nose with mask and make sure there are no gaps between your face and the mask.
- Avoid touching the mask while using it; if you do, clean your hands with alcohol-based hand rub or soap and water.
- Replace the mask with a new one as soon as it is damp and do not reuse single-use masks.
- To remove the mask: remove it from behind (do not touch the front of mask); discard immediately in a closed bin; clean hands with alcohol-based hand rub or soap and water.

SUPC	Pack/Size	Description
7128365	1/50 CT	MASK FACE 3 PLY DISPOSABLE CON

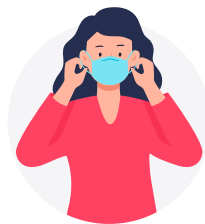
Contact your Sysco Marketing Associate for product details and availability



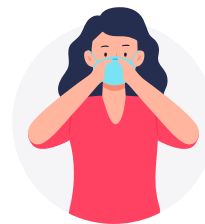
1. Clean your hands with soap and water or hand sanitizer



2. Hold the mask with the colored side away from you.



3. Hold the mask by the ear loops and place a loop around each ear.



4. Mold the stiff edge to the shape of your nose.



5. Pull the bottom of the mask over your mouth and chin.