

# INFECTION PREVENTION: Cleaning, Disinfection and Hygiene



## GENERAL GUIDELINES

- ▲ Follow local public health recommendations related to local infection activity and need for isolation and closing.
- ▲ Reinforce personal hygiene (hand hygiene and cough etiquette) throughout your operation.
- ▲ Provide hygiene materials such as tissues and hand sanitizer stations.
- ▲ Stock applicable disinfectant products (check with your Ecolab representative for a list of products).
- ▲ Closely monitor employee health. Encourage symptomatic employees to stay home.

## FULL SERVICE RESTAURANTS

## SPECIFIC GUIDELINES FOR PROCEDURAL IMPLEMENTATION

### DINING ROOM

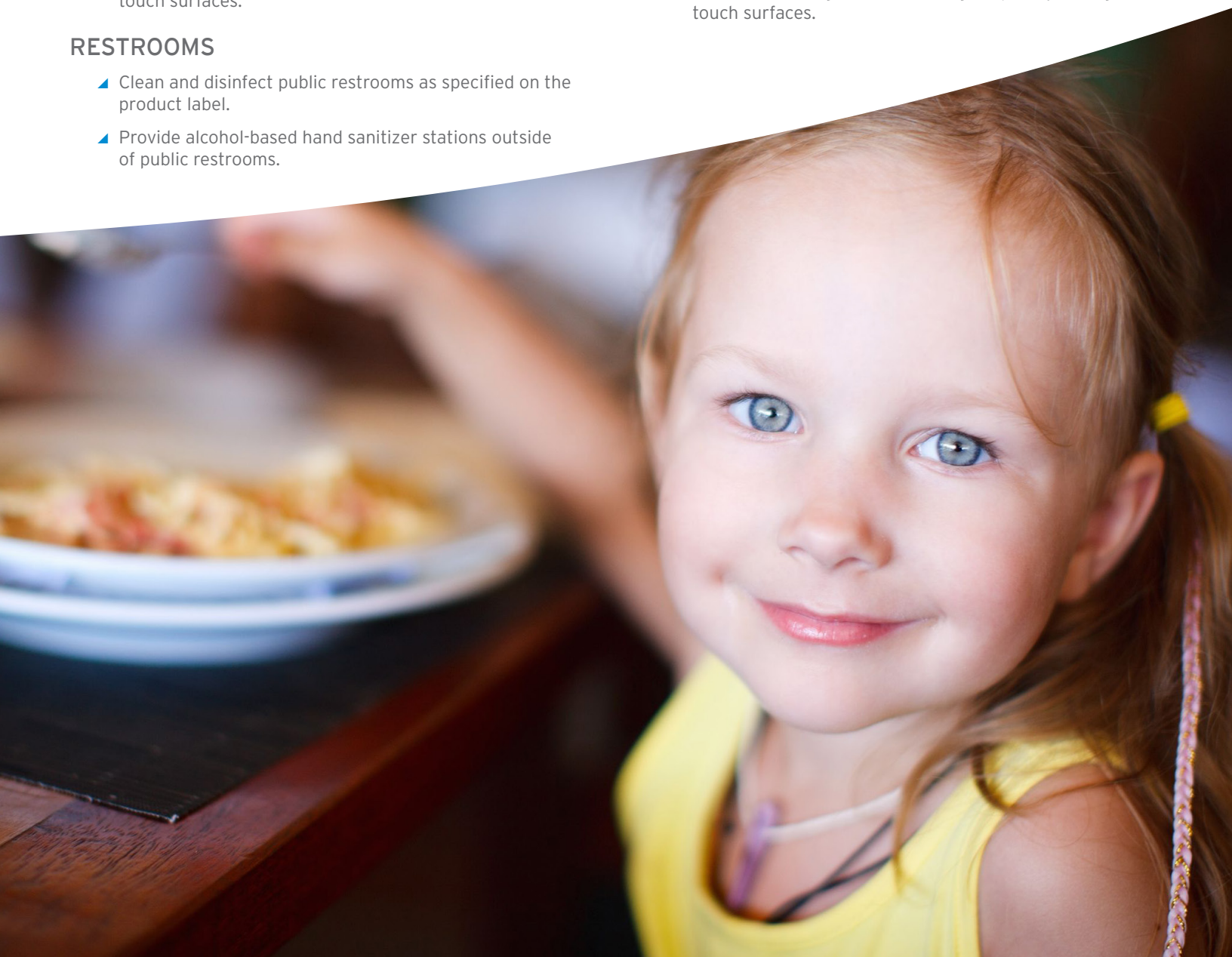
- ▲ Provide alcohol-based hand sanitizer stations.
- ▲ Increase cleaning and disinfecting frequency for high-touch surfaces.

### RESTROOMS

- ▲ Clean and disinfect public restrooms as specified on the product label.
- ▲ Provide alcohol-based hand sanitizer stations outside of public restrooms.

### KITCHEN AND BACK OF HOUSE

- ▲ Provide alcohol-based hand sanitizer stations.
- ▲ Increase cleaning and disinfecting frequency for high-touch surfaces.



# INFECTION PREVENTION: Cleaning, Disinfection and Hygiene



## SPECIFIC GUIDELINES FOR PROCEDURAL IMPLEMENTATION (CONT)

## FULL SERVICE RESTAURANTS

### EMPLOYEES

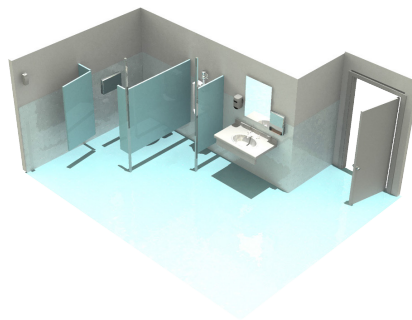
- ▲ Closely monitor employee health. Reinforce personal hygiene and cough etiquette. Encourage symptomatic employees to stay home.
- ▲ Identify critical staff members and functions - develop a business continuity plan. Consider the ability for employees to work from home.
- ▲ Provide hand sanitizer stations, Ready to Use (RTU) disinfectant spray or wipes, and tissues for employees from list provided by your Ecolab representative.
- ▲ Have employees disinfect all personal hard surfaces referenced on the product label.
- ▲ Educate and inform all employees of infection status and proper infection control procedures.

## SPECIFIC TOUCH POINTS



### DINING ROOM AND LOBBY AREAS

- ▲ Door handles, push plates, thresholds and hand railings
- ▲ Dining tables
- ▲ Chairs and booths
- ▲ Menus and bill folders
- ▲ Trash receptacle touch points
- ▲ High chairs
- ▲ Bar area



### RESTROOMS

- ▲ Door handles
- ▲ Sink faucets and toilet handles
- ▲ Towel dispenser handle
- ▲ Soap dispenser push plates
- ▲ Baby changing station
- ▲ Trash receptacle touch points



### BACK OF HOUSE

- ▲ Door handles and push plates
- ▲ Handles of all the equipment doors and operation push pads
- ▲ Handles of the dispensers (beverage, etc.)
- ▲ Ice scoops
- ▲ Walk-in and other refrigerator handles
- ▲ Walk-in refrigerator and plastic freezer curtains
- ▲ Freezer handles
- ▲ 3-compartment sink and mop sink
- ▲ Handwashing sink handles
- ▲ Soap dispenser push plates at handwash sink
- ▲ Towel dispenser handle at handwash sink
- ▲ Trash receptacle touch points
- ▲ Cleaning tools
- ▲ Buckets
- ▲ Telephone keypad and hand set
- ▲ Manager's computer